

DCP-B7500D

brother
at your side

Why compromise, when you have a choice.
Choose genuine. Say no to non-genuine.

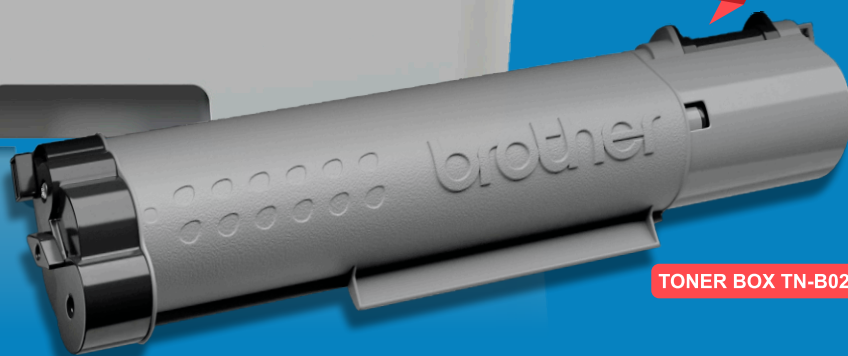
Get Quality, Warranty, Durability, Longevity.

Now
ORIGINAL TONER COST

33 Paise*
Per Page



Best Buy
Price ₹846/-*



TONER BOX TN-B021



Cost Saving
Toner Box Technology



34 Pages
Per Minute



Duplex
Printing



250 Sheets
Paper Tray



2,600 Pages
Inbox Toner

*Terms and conditions apply.

www.brother.in

Technical Specifications

	DCP-B7500D
Key Functions	Print, Scan, Copy and Automatic 2-sided Printing
PRINT FUNCTIONS	
Print Speed (A4/Letter)	Up to 34 / 36 ppm
2-sided Printing	Yes
Print Resolution	600 x 600 dpi; HQ1,200 (2,400 x 600 dpi) quality; 1,200 x 1,200 dpi
First Printout Time (Ready)	Less than 8.5 secs
Max. Monthly Duty Cycle	Up to 15,000 pages
COPY FUNCTIONS	
Copy Speed (A4/Letter)	Up to 34/36 cpm
Reduction/Enlargement (%)	25% - 400% in 1% increments
Copy Resolution	600 x 600 dpi
Copy Features	N in 1
SCAN FUNCTIONS	
Scanning Speed (Mono/Colour)#	22.5 / 7.5 ipm
Scan Resolution	Optical - 1,200 x 1,200 dpi; Interpolated 19,200 x 19,200 dpi
Scan to Features	SharePoint (PC-CC4 Only), Image, OCR, File, Email
PAPER HANDLING	
Input Capacity	250 sheets
Manual Feed Slot	1 sheet
Output Capacity [^]	120 Sheets Face Down
Media Weights	60 to 230g/m ² (Using Manual Feed Slot)
Media Size	A4, Letter, A5, A5(Long Edge), A6, Executive, Legal, Folio, Mexico Legal, India Legal
CONNECTIVITY	
Interface	Hi-Speed USB 2.0
OTHERS	
Processor Speed	600MHz
Memory	128MB
Emulation	PCL6, BR-Script3, PDF Version 1.7
Display	16 characters x 2 lines
OS Compatibility	Windows 7 SP1, 8, 8.1, 10, macOS v10.10.5, 10.11.x, 10.12.x (Download only), CUPS, LPD/LPRng (x86/x64 environment)
Energy Saving Mode	Energy Star
Power Consumption (Printing / Sleep)	475W / 6.2W
Power Source	220-240V, AC 50/60Hz
Noise Level	LpAm = 49 dB(A)
SUPPLIES	
Standard Yield Toner (TN-B021)*	Approx. 2,600 Pages
Drum (DR-B021)	Approx. 12,000 Pages
Inbox Toner	Approx. 2,600 Pages
DIMENSIONS & WEIGHT	
Dimension (W x D X H)	410 x 398.5 x 272 mm
Weight	10.5kg

[^]Actual output tray capacity may vary depending on environmental conditions

*In accordance with ISO/IEC 19752



Brother strongly recommends the use of genuine Brother consumable products only. Benefits include better quality print, greater yields per consumable, protection of your machine from damages and achievement of optimum performance. As a precaution, please note that your machine warranty may not cover any damages arising from the use of non-genuine consumables.



Brother International (India) Pvt. Ltd.

Toll Free : 1800 222 422 (For MTNL & BSNL user), 1800 209 8904 (For Others)

Operating Hours: Mon. to Fri. (8.30am to 6.30pm) & Sat. (9.00am to 6.00pm)

Closed on Sunday and Public Holidays.

www.brother.in